

Website Content

Wednesday, 03 April 2024

Our logo and colour palette



REDLAND is embracing its name, and showing its affinity with planet Mars, a LAND that is RED!

The theme aims to provide a memorable and characterful experience to prospective clients.

The existing logo will have a new dimension (as seen above) the addition of a red planet.

The colour palette has been chosen for the following reasons:

- BLUE; is the dominant colour in tech and a popular colour with both men and women.
- RED; is the colour of our existing logo and its in our name.
- ORANGE; reflects our friendliness, individuality, and confidence.
- Finally, BLACK font will be used on a WHITE background.

Grey #818285

RED #e40f1b

BURGUNDY #982724

Orange #d15f20

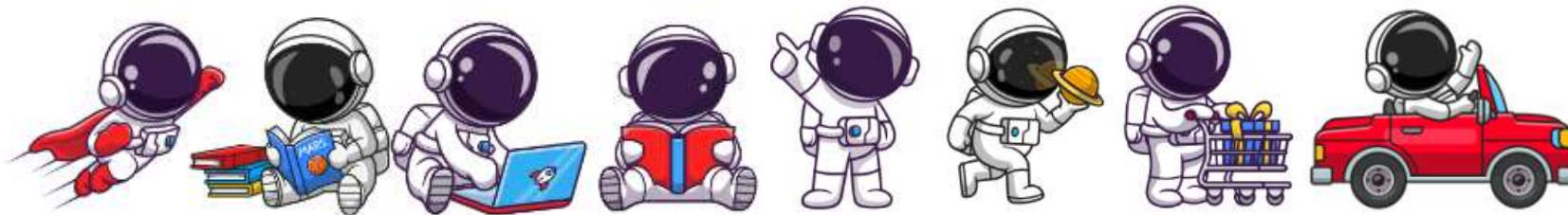
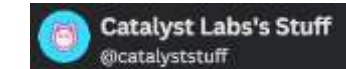
Blue #004d67

Navy #052d3e

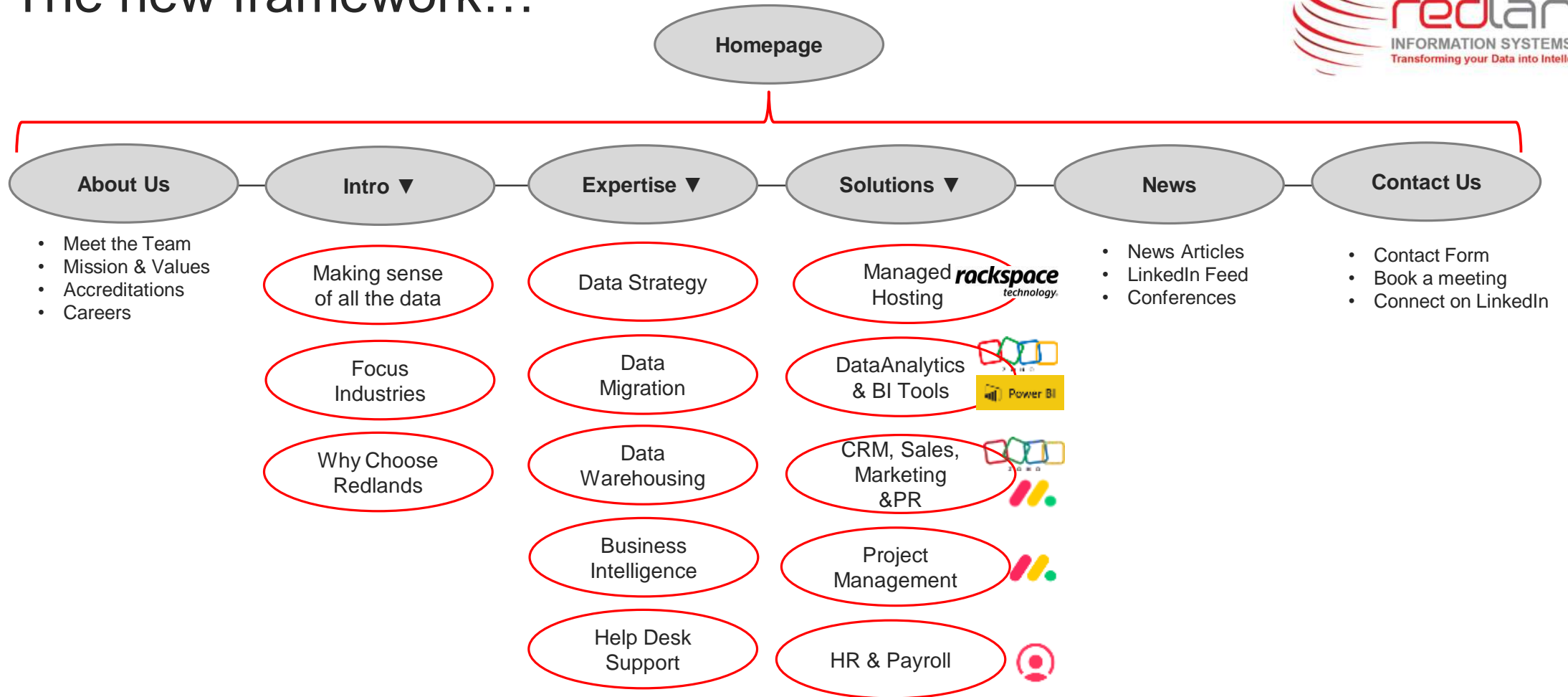
Black #000000

Meet 'Codey' our friendly astronaut, here to navigate visitors around the website.

All astronauts are from Canva.com and designed by:



The new framework...





Bringing your data into one source of truth

Transforming your data into actionable insights, enabling decision-making processes and propelling business growth

[Contact Us](#)





- Are you relying on finance or IT experts to generate your reports and dashboards?
- Finding it difficult to measure KPI's and keep on target with your business planning & strategy?
- Overwhelmed with a growing number of bespoke software solutions, and searching for one interconnecting and overarching view?



Making sense of all the data



Our Expertise

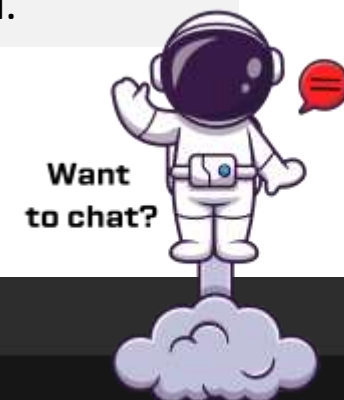


Find a solution

Redlands Information Systems are a dedicated Data Warehouse company specialising in Business Intelligence solutions, that offer data visualisation and actionable business insights.

Put simply, we transform your data into intelligence, from planning & logistics, through to forecasting and budgets, enabling you to make faster and smarter decisions about how to strategically move forward. We bring data from across your business systems into one place. One source of truth, providing one holistic view.

Our team of Business Analysts, Solution Architects, Developers and Project Managers have significant experience of working with companies of all shapes and sizes, from major corporations where the IT and commercial landscape is highly integrated, through to SME's and start-ups who want to succeed.

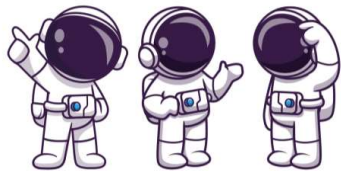




Meet the Team

Our bunch of geeky coders are mission-lead navigators, bringing all your data into one manageable place, enabling your business to discover new frontiers

Contact Us



You might think the name “Redland” comes from planet Mars, also known as the “red planet”. But the truth is, our team is a fun bunch of geeky coders who just love to explore and discover new frontiers, bringing all your data into one manageable place, leaving you to boldly move forward!

Our real roots come from Queensland, Australia. The company is named after ‘Redland Bay’ (also known as Redlands). Located south-east of Brisbane, the city’s name comes from the rich red volcanic soil, which is high in mineral content and harvests a substantial amount of Brisbane's market garden produce.

Mission Control



Tony Atkinson
Operations Manager

Master of Operations, he effortlessly plays an expert game to drive success.



Fran Ambrose
Technical Director

Our Music Maestro knows how to orchestrate definitive timely solutions.



Chad Cookney
Senior Projects Manager

Our Viking Warrior plans projects with might. A machine in planning, fearless day and night.

The Coders & Navigators



Rachel
Developer

Our Code Composer: Debug, Harmonise, Amaze!
Elevating coding with precision and innovation.



Matt
Developer

DevStriker: Coding with offensive precision, Scoring solutions in the digital arena.



James
Developer

A code maestro, like a dog with a bone, Sniffing out bugs, in a digital zone.



Phil
Developer

Script Sculptor: Crafting code stories, Refining lines, Elevating tech to blockbuster heights.



Peter
Developer

Our resident DJ, spinning discs at the weekends, and spinning the numbers in the week.



Sarah
Business Development

When she is not riding the waves, she's making waves, attracting new business.



Matt
Business Analyst

Our Eager Analyst, has an eagle eye on the detail, he doesn't miss a trick.



Daine
System Test Lead

Our Go-Getting Gamer will never give-up, he is will test, test and test again.



Nikita
Service Desk Analyst

Our Helpdesk Heroine is always here to support your top tech needs.

About Us



About Us

Intro ▾

Expertise ▾

Solutions ▾

News

Contact Us



Our Mission

Our sole mission is to present one source of truth when presenting your data. Through data mining, we ‘extract, transform and load’ your data into dashboards that provide meaningful insights and support effect business decisions.

We pride ourselves on understanding your business needs and providing solutions that bring new perspective and deliver a universe of possibilities



Our Values

Discover; we listen, we learn & we collaborate,

Trust; we understand the value of your data and we won't compromise it's integrity and security,

Passion; we keep working until we find solutions that work for you, taking you boldly into a new dimension

Teamwork; we are an extension to your business, and by your side with our multi-channel helpdesk.



Join the Team

If you have a geeky quirky side to you, you'll fit right in!! Whether you are an experienced Architect or Analyst, a Developer, or an ambitious Service Desk Technician, just drop us a line, and the next time we are recruiting we'll inform you of new positions opening.



This accreditation demonstrates that we have been formally assessed on the following five key security controls:

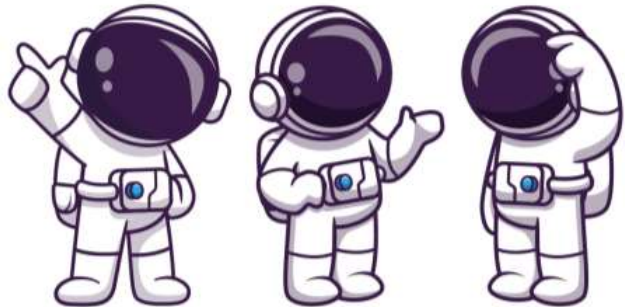
- Protecting and preventing malware, including viruses.
- Controlling who has access to your data and services.
- Setting up and maintaining secure configuration settings.
- Keeping devices and software up to date.
- The use of firewalls to secure networks.



At Redlands, we understand the critical importance and value of your data. Maintaining its security and integrity is paramount to us. We are committed to handling data securely, consistently, and against legal and regulatory compliance. That's why we work to the principles set-out in ISO-27001 Information Security Management Systems, and we continually monitor and improve our processes.



At Redlands, we understand the importance of meeting statutory and regulatory requirements. We are committed to producing a high quality standard, consistency, efficiency and client satisfaction. That's why we work to the principles set-out in ISO-9001 Quality Management System, and we continually monitor and improve our processes.



Full Name: _____

Email Address: _____

Telephone No: _____

LinkedIn Profile: _____

Attach CV: _____

- Looking for:
- Full-Time Contract
 - Part-time Contract
 - Full-Time Permanent
 - Part-time Permanent

- Interested in
- Solution Architect
 - Software Developer
 - Software Tester
 - Service Desk Technician
 - Business Analyst
 - Business Development
 - Project Management

Submit



Making Sense of all the data



About Us

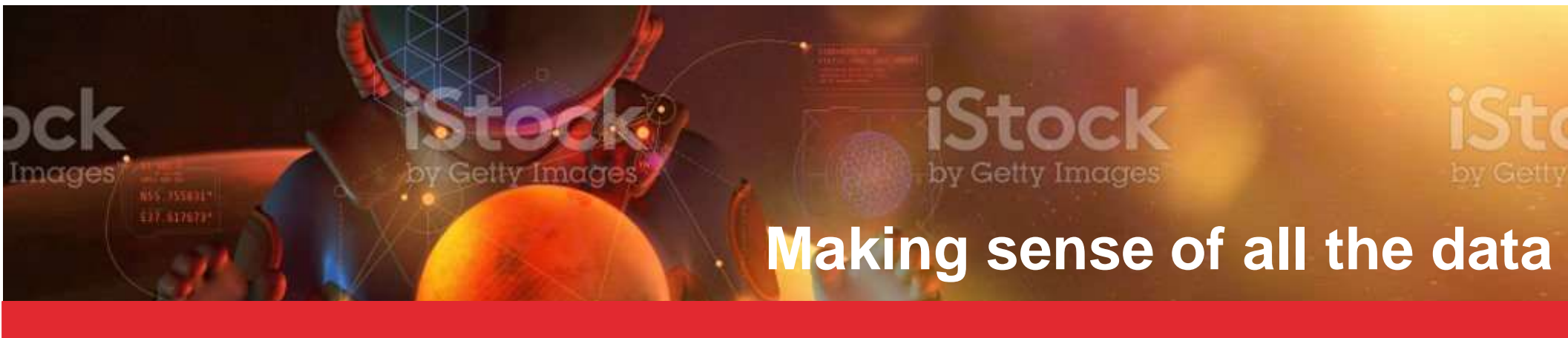
Intro ▾

Expertise ▾

Solutions ▾

News

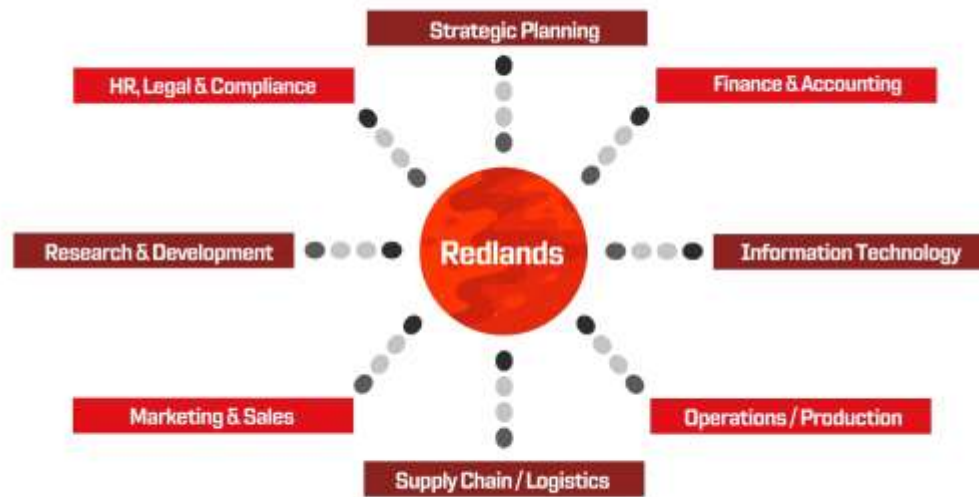
Contact Us



Feeling lost amongst the expanse and complexity of data?

If you are data rich and time poor, then it's time to harness your data and make it work efficiently for you

Yes, help ME!



Making Sense of all the data



About Us

Intro ▾

Expertise ▾

Solutions ▾

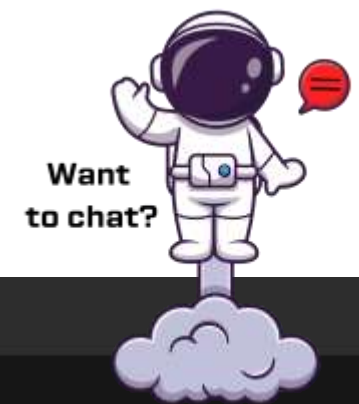
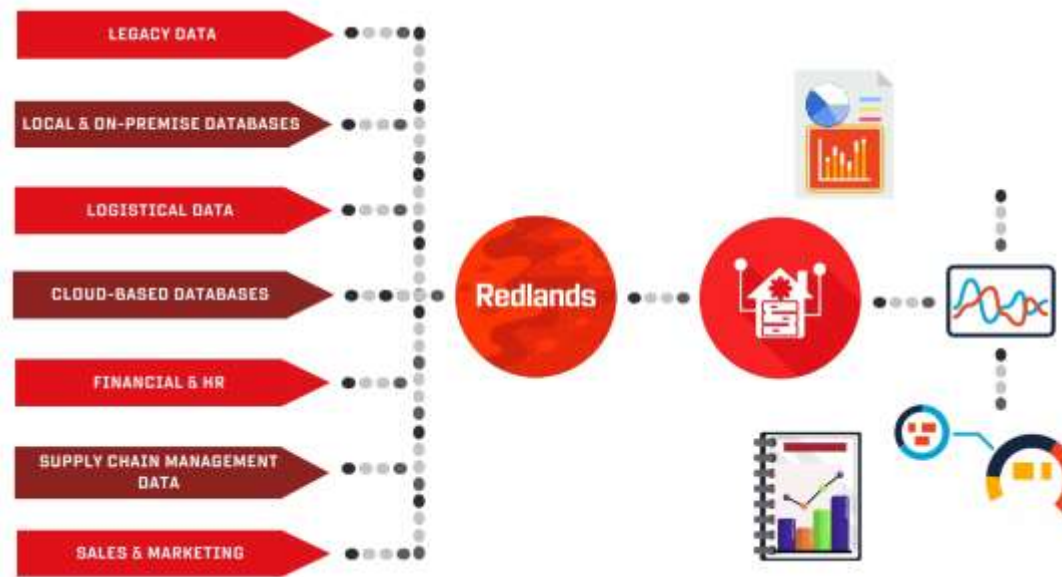
News

Contact Us

With over 300 million businesses worldwide, the amount of data generated hour by hour, minute by minute is simply colossal. Data about customers, suppliers, products & services is generated at an alarming rate, and processing and analysing the data is time consuming and complex.

Businesses measure themselves by profit and loss, challenges and successes, and for any business to grow, it has to 'make sense of all the data'. This enables a business to discover emerging trends and meaningful insights, and to establish what is working well and where or when to change direction.

Every business comprises of several silos of data, for example; Supply Chain Management, Logistical Data, Client Data, Sales & Marketing, Financial & HR, Legacy Data, which is stored locally on-premise or in the cloud. By connecting and integrating data from multiple departments, it will enable insights that are not possible on their own.



Focus Industries



About Us

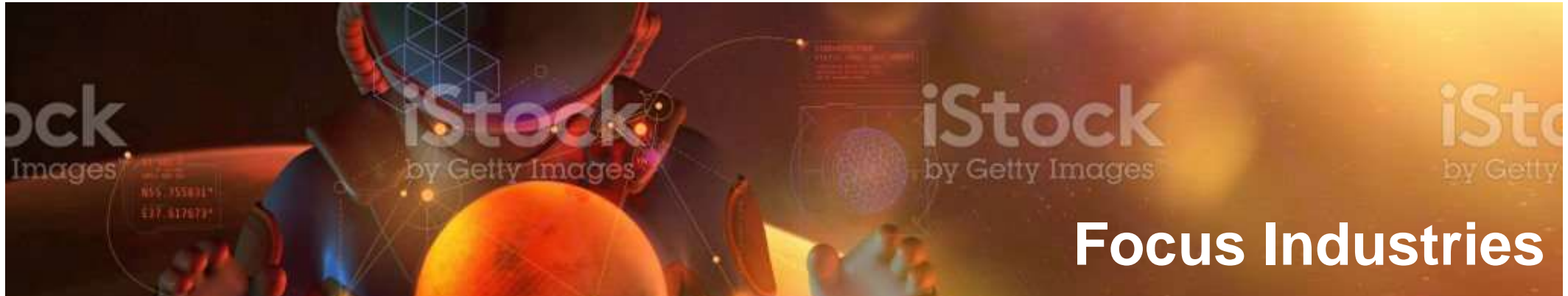
Intro ▾

Expertise ▾

Solutions ▾

News

Contact Us



Transforming operations across industry sectors

Industry specific solutions enabling smarter and faster decisions.

Contact Us



Parcel Delivery

Manufacturing

Retail

SME's

Logistics

Automotive

Government

Life Sciences



By utilising the power of your data, we provide the ability to optimise productivity, efficiency and profitability across your business.



Parcel Delivery is the backbone of e-commerce, ensuring consumers receive their purchases whether just down the road or across the globe.

This rapidly evolving industry has many data aspects to content with, from Last Mile technology, including couriers' load and parcel lockers occupancy, through to customer experience, efficient returns, and the competitive same-day delivery. This data rich environment needs a trusted partner for its data warehousing and BI solutions.



Supply chains have complex networks of suppliers, manufacturers, distributors, and retailers, with colossal amounts of data generated.

From Production Analysis and Forecasting Operations, through to Route Optimisation and Capacity Planning.

The logistics industry is time sensitive and requires fast data extraction and analysis, including predictive, descriptive, or prescriptive models, depending on the objectives and data sources.

Focus Industries



About Us

Intro ▾

Expertise ▾

Solutions ▾

News

Contact Us



Retail

The Retail sector faces many challenges when it comes to transforming legacy systems and embracing new operating models. This is further compounded by the ever-changing landscape of consumer behaviour.

Let Redlands work with you to improve inventory management, track customer behavior, and personalise the shopping experience.



SME's

There are many SME's and Professional Services that have taken incremental steps towards better efficiency, and collaboration.

Redlands can support business growth by enabling improvements to tracking revenue, profits and bespoke KPI's.

From customer preferences and behavior, to sales and marketing performance, including the latest trends within the marketplace.



Automotive

The Automotive industry is always found at the forefront of technology and innovation, aiming to enhance vehicle performance, quality, safety, efficiency, and win customer satisfaction.

From vehicle design and testing, to producing low emissions and electric vehicles, Redlands can support with improvements to quality, productivity and marketing.

Focus Industries



[About Us](#)

[Intro](#) ▾

[Expertise](#) ▾

[Solutions](#) ▾

[News](#)

[Contact Us](#)



Life Sciences

The Life Science sector is under constant pressure to improve patient outcomes whilst reducing costs. Data analytics is transforming drug development and discovery by enabling researchers to process and analyse vast amounts of data in a fraction of the time.

Redlands can work with you to accelerate your Research & Development programs, and maintaining regulatory compliance.



Government

Digital transformation in central and local government can support public engagement, improve service delivery, and reduce administrative costs.

With the increasing use of cloud-based solutions, Redlands can offer improve collaboration & increase flexibility, whilst supporting digital transformation from legacy-based systems that are not compatible with new technologies.



Manufacturing

The Manufacturing industry has to focus heavily on the digital thread that ties all aspects of the manufacturing process together; from supply chain to design, and engineering to production.

Redlands can support Manufacturers to reduce costs associated with errors and rework, speed up product development timelines, and create a better experience for customers.



Want to chat?

Why choose Redlands



About Us

Intro ▾

Expertise ▾

Solutions ▾

News

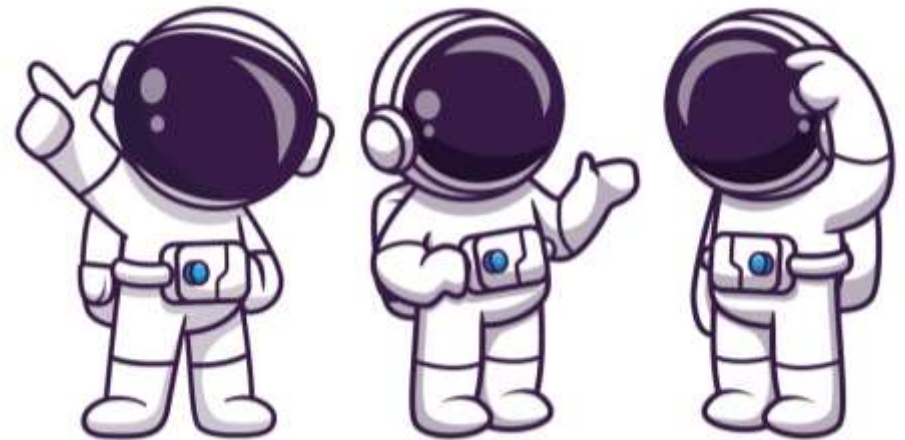
Contact Us



Make our team part of your team, we'll fit right in!

Our mission-lead navigators will bring your data into one manageable place, enabling your business to discover new frontiers

Work with Us



Why choose Redlands



About Us

Intro ▾

Expertise ▾

Solutions ▾

News

Contact Us

Data Driven & Focused: Redlands are highly focused on enabling every client to be 'data driven'.
From the identification of data sources and developing a strategic approach, through to delivering a successful application and adoption of bespoke Business Intelligence (BI) solutions.

Innovative & Intelligent Solutions: Redlands work collaboratively to ensure the best results.
We understand that every client is unique. We work hard to unearth the KPI's that really matter and develop innovative and intelligent solutions that meet specific strategic goals and objectives.

Giving Excellence: Redlands makes sure that every client receives excellent and timely service.
We believe in excellent communication, accountability, respect and professionalism at all times. We listen, we learn and we deliver results that enable our clients to achieve the best results.

Integrity & Value: Redlands knows that being open and honest, helps to build trust & credibility.
We bring value to the services we offer and will deliver high quality and responsive results.

Teamwork: Redlands work collaboratory, as if an extension of your team, always present.
Collaborating with colleagues and other departments to ensure a unified and consistent customer experience. Teamwork helps address complex issues and deliver comprehensive solutions.

Agile & Responsive: Redlands prides itself on delivering proactive and reactive responsiveness.
When your business relies heavily on its data transformation, we are by your side 24/7.

Leadership: above all, we know that strong leadership is what gets problems resolved fast.
We believe in highly effective planning, project management and delivery, and strong governance.





Our Expertise

Our expertise offer a pathway to drive success and business growth

We have solutions for all your data needs. From Data Strategies and Data Migration, to Data Analytics and Business Intelligence tools.

Contact Us



At Redlands, we provide the ability to optimise productivity, efficiency and profitability across your business.



Data Strategy: Our expert consultants will map your existing data, understand your business requirements and develop strategies for future data collation, storage and visualisation in rapid time.



Data Migration: Our data architects can transfer your data from one storage system, database, or format to one single repository, ensuring data integrity, accessibility, and operational continuity.



Data Warehousing: We deliver bespoke data warehousing services, creating data management platforms that store data from a wide range of sources. We provide a central repository of information that can be quickly analysed and queried to generate relevant business insights and metrics.



Business Intelligence Tools: Our BI tools are designed to transform your data into intelligence. Turning raw data into meaningful insights for informed decision-making. We can identify trends, patterns, and anomalies in the data, enabling better strategic planning, operational efficiency, and competitive advantage.



Help Desk Support: From Data Warehouses to your choice of BI Software, our dedicated Support Desk team of professionals are continually by your side, addressing your technical issues promptly and efficiently.





Plan your data future, by being data-driven

Develop a roadmap for success, with our expert guidance and consultancy services

Show me the way



- Business Requirements
- Existing Data Sources
- New Data Sources
- Data Literacy & Skills
- Data Storage & Tools



Prioritising urgent, tactical, day-to-day tasks above a long-term strategic direction is not uncommon. As the levels of complex data mount up, the only way to be truly be 'data driven', is to develop and deliver a Data Strategy.

A Data Strategy will provide a clear roadmap encompassing; business objectives, identifies the data sources, addresses the skills gap and levels of data literacy. It will examine the technologies required, that will lead to a successful application and adoption.

The team at Redland Information Systems can provide consultancy on a variety of topics, and provide support for the adoption of the tools and technologies provided, via our training and helpdesk service.



Business Requirements: define the strategic goals and establish the KPI's



Data Assessment: identify the data source and map the existing architecture



Data Literacy: assess the organisational structure, skills and learning requirements



Data Storage: choose a data storage solution and migrate the data



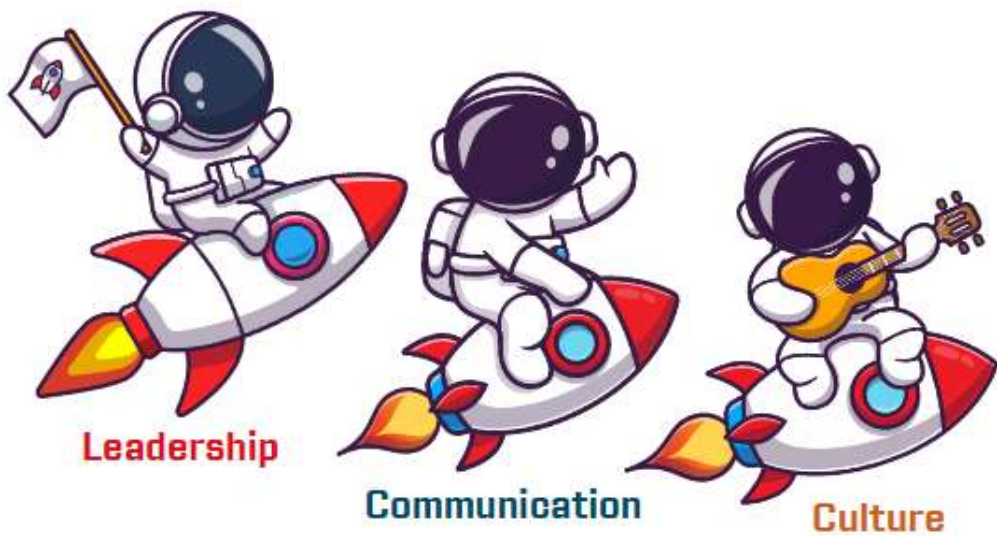
Data Tools: choose the data visualisation technology and the user experience



Data Governance: ensure robust processes, polices and procedures are in place

Take the voyage with us...





Leadership, communication and workplace culture are key pillars of a robust Data Strategy. Engagement with the entire workforce is critical to establishing departmental KPI's, understanding the existing and desired tools & tech, and acknowledging and nurturing the level of data literacy.

Data is just data, it's how you use it that makes the magic. We hear a lot about the skills gap when it comes to data literacy and technical data skills. Employees need to be able to use the tools given, otherwise low adoption rates will continue.

The team at Redland Information Systems understand that having a robust Data Strategy is paramount for successful adoption of the tools and technology provided, and can provide consultancy on a variety of key elements.

[Find Out More](#)



Data Migration



About Us

Intro

Expertise

Solutions

News

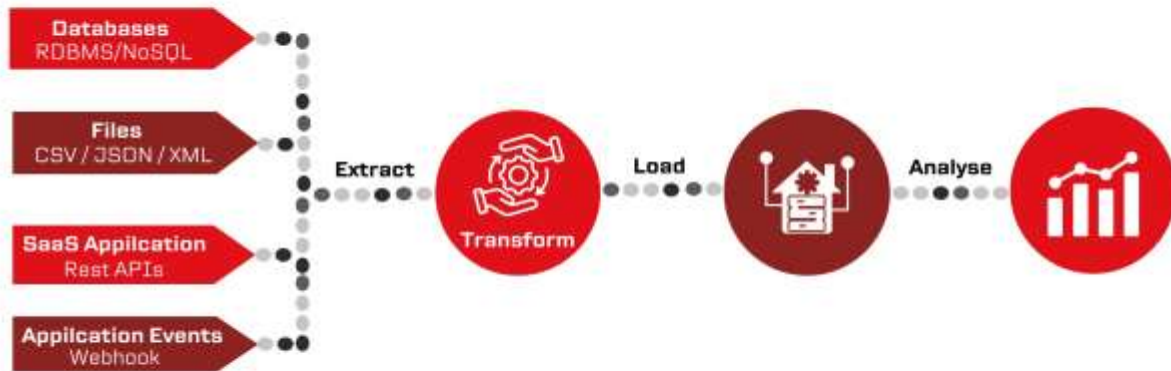
Contact Us



Migrate your data into a repository to form a single source of truth

Our purpose built Data Warehouses will securely hold your data, allowing fast and efficient data extraction

Contact Us



Our Data Migration capabilities lever decades of experience through our well-trodden path of delivery success.



Define, Gather, Assess, Plan: The objective(s) of the migration will be defined and the necessary data gathered and assessed; it's location, format, complexity, quality and quantity. A plan will be formulated including timelines, risks and challenges.



Data Cleansing: The data is profiled; its format, characteristics, relationships, and dependencies, then cleansed by addressing inconsistencies, errors, or duplications.



Data Mapping: The data migration is mapped, with a clear pathway between the source / raw data and the target system; the Data Warehouse.



Extract, Transform & Load: The data is extracted from the source using appropriate tools or scripts, it is transformed or converted into the format required, then loaded into the data warehouse awaiting analytical processing.



Validation & Testing: Data validation ensures the migrated data meets quality and integrity requirements, followed by functional, performance & user acceptance testing.



Monitor, Audit & Maintain: The data is monitored to verify the successful migration and is accessible as planned in the target system.

[Find Out More](#)





Data warehouses custom-built to your requirements

Migrate data into a single repository and create one source of truth

[Build My Warehouse](#)



Design & Development

Integration & Interface Management

Hosted or Managed Service

Solution Support & Maintenance



Data Warehouses are a form of data management platform that store data from a wide range of sources within a company. They provide a central repository of information that can be quickly analysed and queried to generate relevant business insights and metrics.

How can you tell if you need a Data Warehouse?



Complex Data Environment: If your organisation deals with large volumes of data from various sources, such as multiple databases, applications, or external systems, a data warehouse can provide a centralised repository for integrating and managing this diverse data.



Analytical Requirements: If your business requires complex reporting, business intelligence, or analytics, a data warehouse can provide a structured and optimised environment for these activities. It allows for efficient querying and reporting on large datasets.



Data Quality and Consistency: If you face challenges with data quality, consistency, or reliability across different systems, a data warehouse can serve as a single source of truth, where data is cleansed, standardised, and validated.



Performance Issues: If your current systems experience performance issues, especially during complex queries or reporting activities, a data warehouse can be designed and optimised for analytical processing, improving query performance.

Determining whether your organisation needs a data warehouse involves assessing your data-related needs, the complexity of your data environment and your business goals. Managing it securely and effectively is what we do, offering cost-effective, flexible, scalable, high-performance data platforms and solutions. Our services include;

Data Warehouse



About Us

Intro ▾

Expertise ▾

Solutions ▾

News

Contact Us



Data Integration Needs: If your organisation needs to integrate data from various sources and wants a unified view of the business, a data warehouse can provide a platform for integrating and transforming data to support decision-making.



Scalability: If your organisation is growing, and you anticipate an increase in data volumes and analytical demands, a data warehouse can scale to accommodate growing data needs.



Historical Data Analysis: If your business requires historical data analysis or trend analysis, a data warehouse allows you to store and manage historical data efficiently, enabling users to analyse trends and make informed decisions based on historical performance.



Application Integration: If your organisation uses various business applications and you need a platform that can integrate with these applications to provide a holistic view of your business, a data warehouse can serve as a central hub for integrated data.



Data Governance and Security: If your organisation needs to enforce data governance policies, manage access controls, and ensure data security, a data warehouse provides centralised control over data access, security, and compliance.

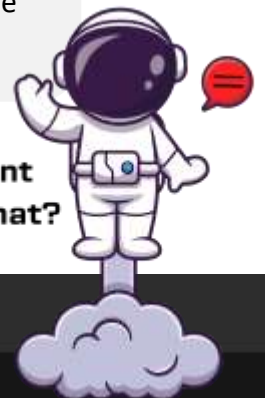


Strategic Business Goals: If your organisation's strategic goals include becoming more data-driven, improving business intelligence capabilities, and making data-informed decisions, a data warehouse can play a crucial role in achieving these objectives.

Find Out More



Want to chat?



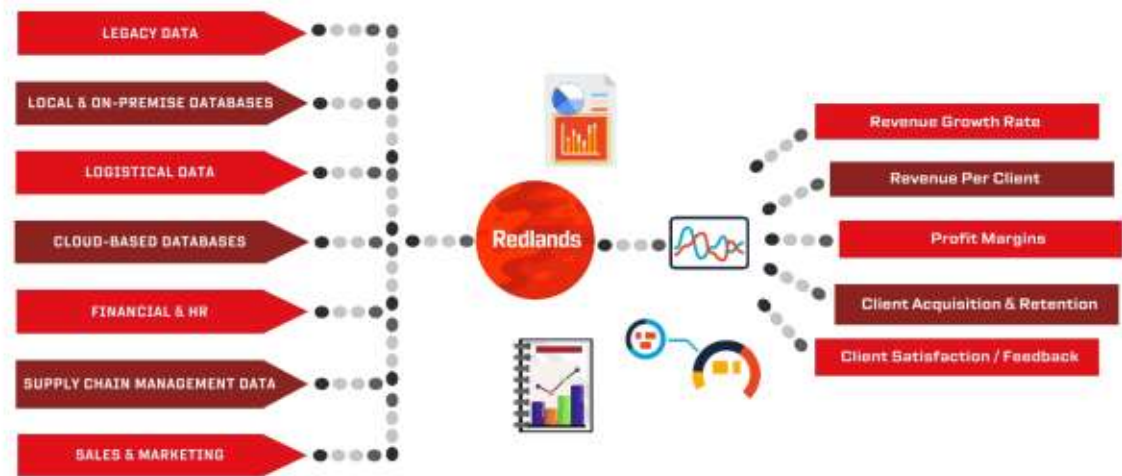


To be purpose-driven is to be Data-Driven

What's the purpose of your BI tools?

- To improve profitability
- To improve performance & efficiency
- To improve customer satisfaction

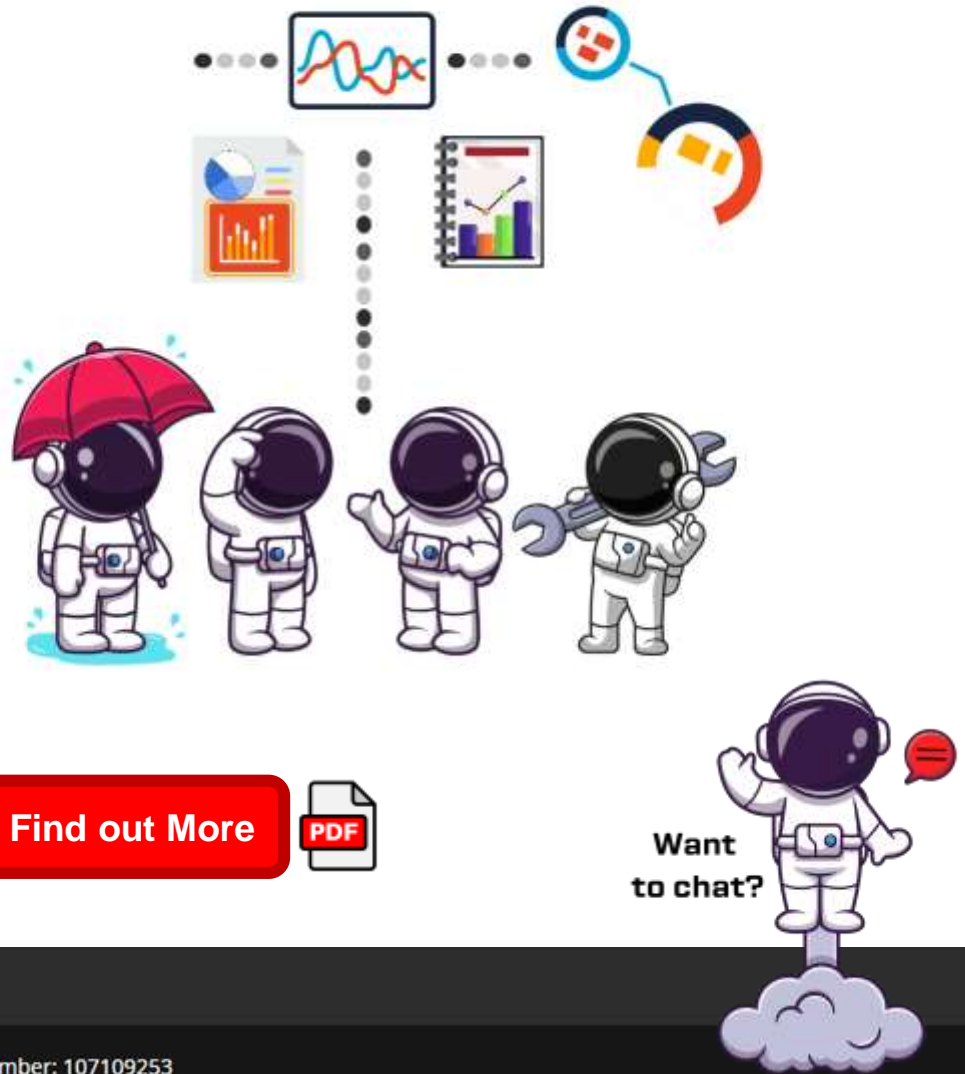
Contact Us 



The purpose of Business Intelligence (BI) tools are to help organisations make informed decisions by providing insights into their data. These tools gather, process, and analyse large volumes of data from various sources to produce meaningful and actionable insights.

Whilst “off the shelf” or “self-service” BI tools are great enablers, *Redland Information Systems* provide a bespoke service whereby we collaborate and consult with your strategic business planners, right the way through to your end users to understand what KPI’s and metrics are essential and which are those that motivate the workforce to grow the business from strength to strength.

Our team of Business Analysts, Solution Architects, Developers and Project Managers have significant experience of working with companies of all shapes and sizes, from major corporations through to SME’s and start-ups, and we are capable of working with a wide variety of BI software tools.

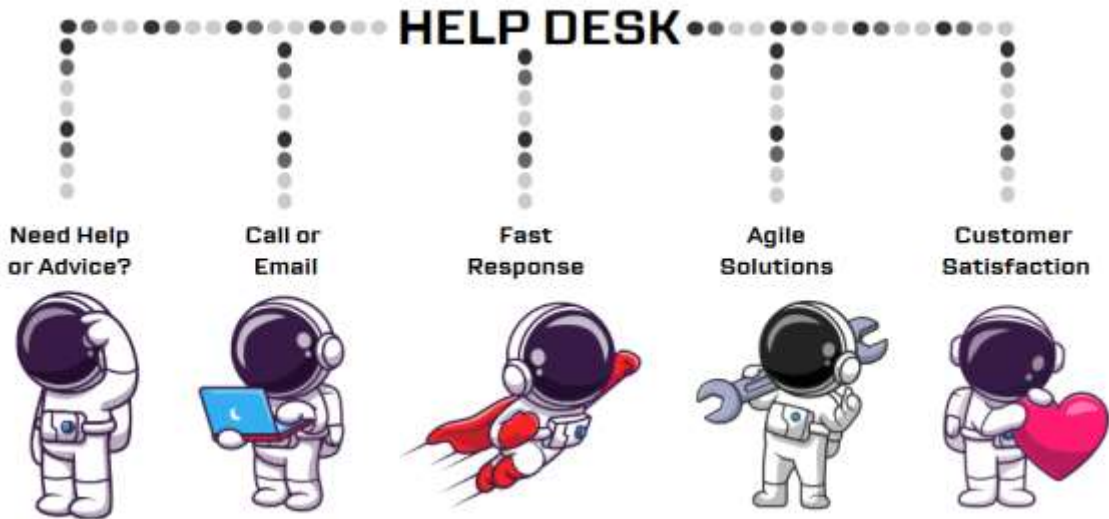


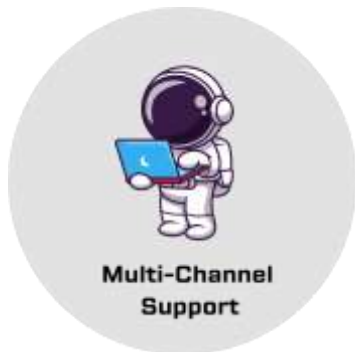


Elevate your operations with Help Desk Support

Our dedicated team of professionals are continually by your side, addressing your technical issues promptly and efficiently

[Contact Us](#)





Multi-Channel Support

Multi-Channel Support: Reach out to us via phone or email for convenient assistance.

Rapid Response: We prioritise swift issue resolution, understanding the importance of minimising downtime to keep your operations uninterrupted.



Experienced Team

Experienced Team: Rely on our skilled and knowledgeable support professionals who are ready to tackle a wide range of technical issues.

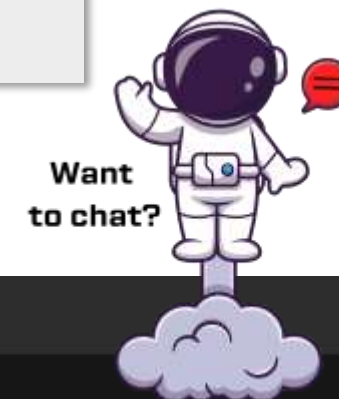
Tailored Solutions: Our team doesn't believe in one-size-fits-all solutions. We tailor our support to meet the unique requirements of your situation.



Proactive Monitoring

Proactive Monitoring: Our service desk employs proactive monitoring to identify and address potential issues before they impact your operations.

Business Hours: Our service desk operates during business hours to assist you whenever you need support.





Our partnerships offer our clients a variety of data integration tools

We have solutions for all your data needs. From Data Analytics and Business Intelligence tools, to a new CRM or HR system, we have it covered.

Contact Us





Data Analytics & Business Intelligence (BI) Tools: The purpose of Data Analytics and BI Tools is to transform raw data into meaningful insights for informed decision-making. They help organizations identify trends, patterns, and anomalies in their data, enabling better strategic planning, operational efficiency, and competitive advantage. By providing actionable intelligence, these tools support businesses in understanding their performance, customer behaviors, and market opportunities, ultimately driving growth and innovation.



Project Management: A project can vary from small and simple, to large and complex taking many months if not years to complete. Project Management Software can help organisations to focus on task delegation, file sharing, collaboration, resource planning, time management, risk management, budget, and enhance communication. All these elements can enable a project to be completed on time and on budget. With performance tracking and progress monitoring aspects, this software will support the long-term business productivity.



CRM, Sales, & Marketing: a CRM platform enables the collation, storage, management and analysis of customer data. From the collation of customer contact details, through to the analysis of what, when, and how they buy they're preferred products and services. From tracking a customer through the sales pipeline, through to understanding their marketing and communication preferences. CRM systems have the ability to communicate on mass to a segmented audience and will generate business growth.



Human Resources: The benefits to using purpose built software to manage your human resource are many, including shift/time management, planned absences and sickness monitoring, with improved data storage and security. Other functionalities include; recruitment and onboarding processes, contract management, training and development, performance monitoring and evaluation, and payroll. Staff are also empowered with self-service functionality and enhanced company culture.



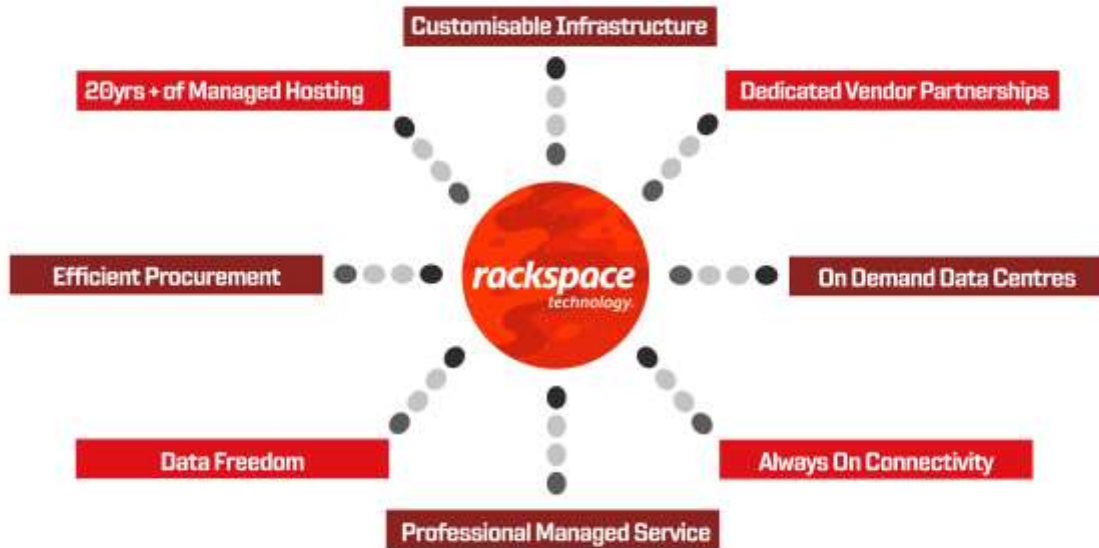


Explore what managed hosting on bare metal servers can do for you

Managed hosting on dedicated bare metal servers delivers maximum uptime, visibility, security and control for your custom dedicated needs.

[Contact Us](#)

rackspace
technology.

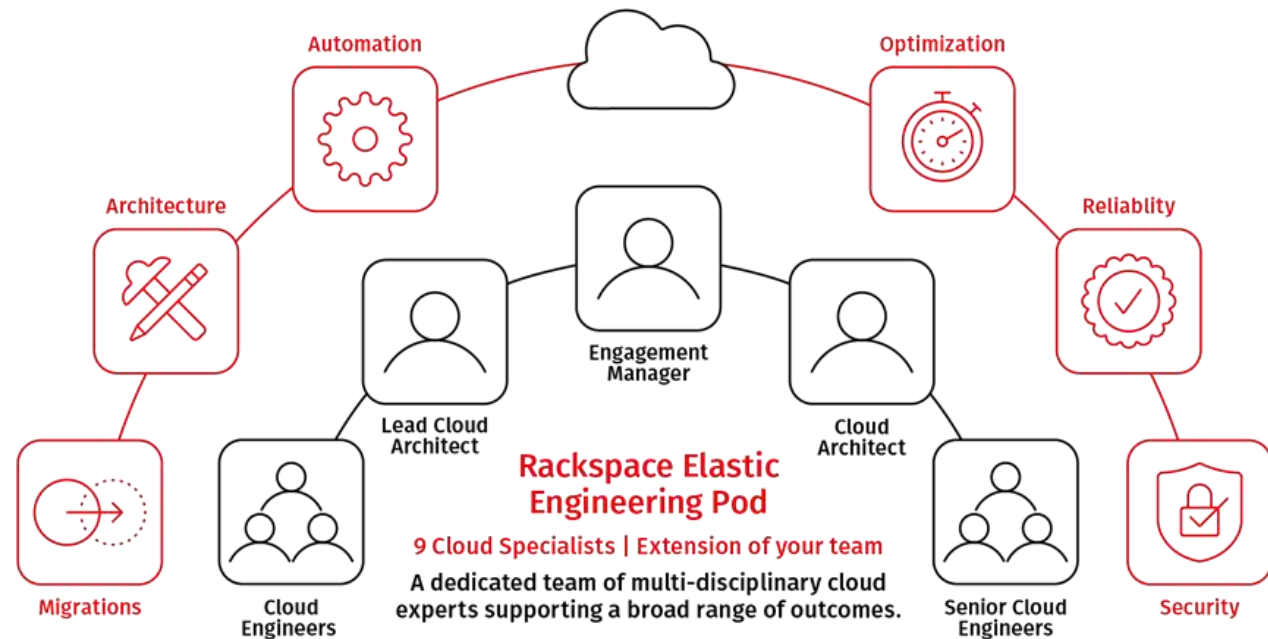


We are proud Rackspace Technology partners, providing dedicated cloud environments to keep your data secure.

When our customers require a managed hosted solution they want it to be responsive, reliable, secure, scalable and high performance.

That's why we chose Rackspace Technology as our hosting provider, they are a leading global provider of public, private and hybrid cloud platforms.

The Rackspace approach is more than server hosting. It is about customer service, expertly managing mission-critical IT environments and infrastructures 24/7/365.



Managed Hosting on bare metal servers is a dedicated, secure environment that offers customized data storage and connectivity.

We'll work with you to design and build a customized secure hosting platform that's 100% dedicated to your unique business needs, so that you don't have to share infrastructure with anyone else.

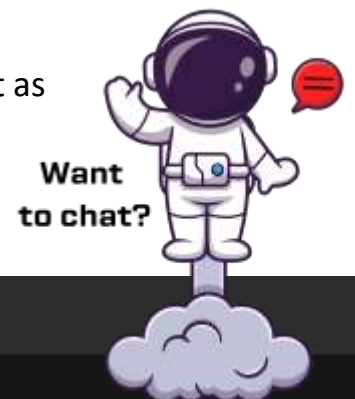
Enjoy peace of mind that comes with best-in-class uptime, high performance and highly flexible support options that help ensure you get the service you need, when and where you need it.

[Request a Demo](#)

Why Rackspace Technology?

Rackspace Technology is a leading global provider of public, private and hybrid cloud platforms. We choose it because....

- **Customisable Infrastructure**, built to scale quickly to meet customers' needs, Rackspace can rapidly scale the hosted environment to meet planned and unplanned requirements, scaling on demand.
- **On Demand Data Centers**, offering a high availability and high performance network, with multiple built-in redundancies and numerous vendor partnerships. Rackspace ensures the data you need is available whenever you need it.
- **Data Backup**, providing flexible and resilient backup solutions for your data so that should any of the hardware fail critical information can be restored without complications.
- **Data Security**, ensuring maximum protection for your data by covering physical, operational and system security.
- **Leading Hosting Provider**, recognized by Gartner and Microsoft as an industry leader, with over 20yrs+ experience.



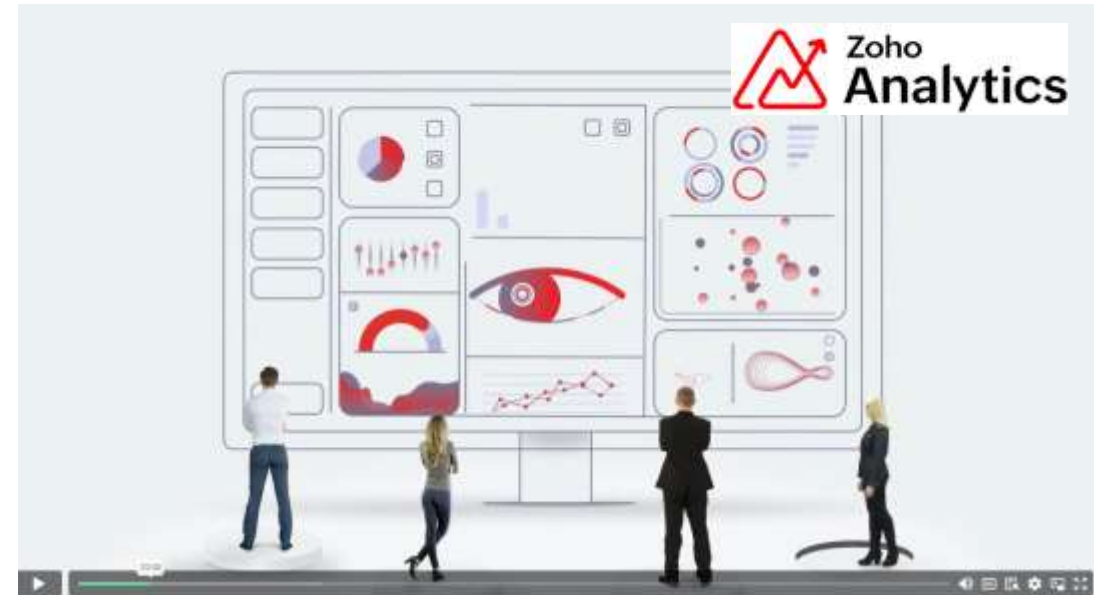


The purpose of Data Analytics and BI Tools is to transform raw data into meaningful insights for informed decision-making. They help organizations identify trends, patterns, and anomalies in their data, enabling better strategic planning, operational efficiency, and competitive advantage. By providing actionable intelligence, these tools support businesses in understanding their performance, customer behaviors, and market opportunities, ultimately driving growth and innovation.



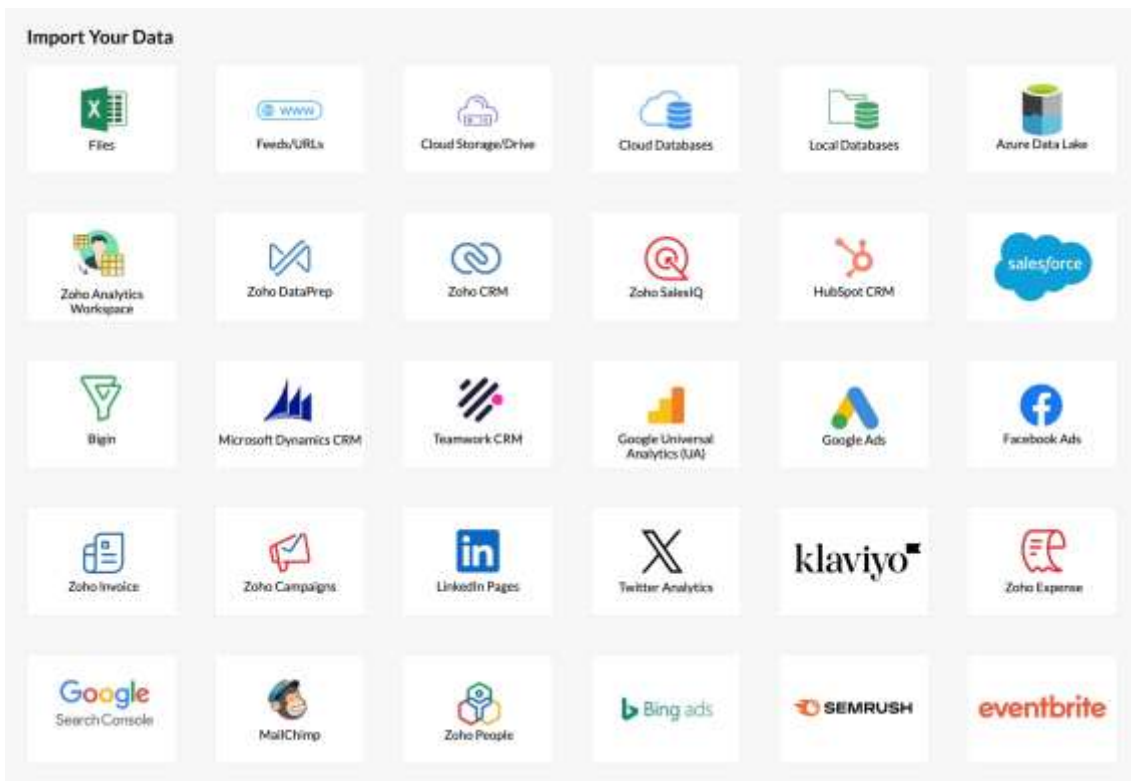
Meet Zoho, a modern Self-service BI and Analytics Platform

Zoho Analytics helps business users connect, prepare and analyse their data, create stunning data visualisations, and discover hidden insights, all within minutes.



**We are proud Zoho partners, your certified experts,
transforming data into insights and actions in minutes.**

Turn raw data into insightful reports and dashboards. Track your key business metrics, see longtime trends, identify outliers and predict the future.



CONNECT

Connect and blend data from anywhere

Connect to a multitude of sources like files and feeds, popular business apps, cloud and onpremise databases, custom apps and more, with our easy-to-use connectors.

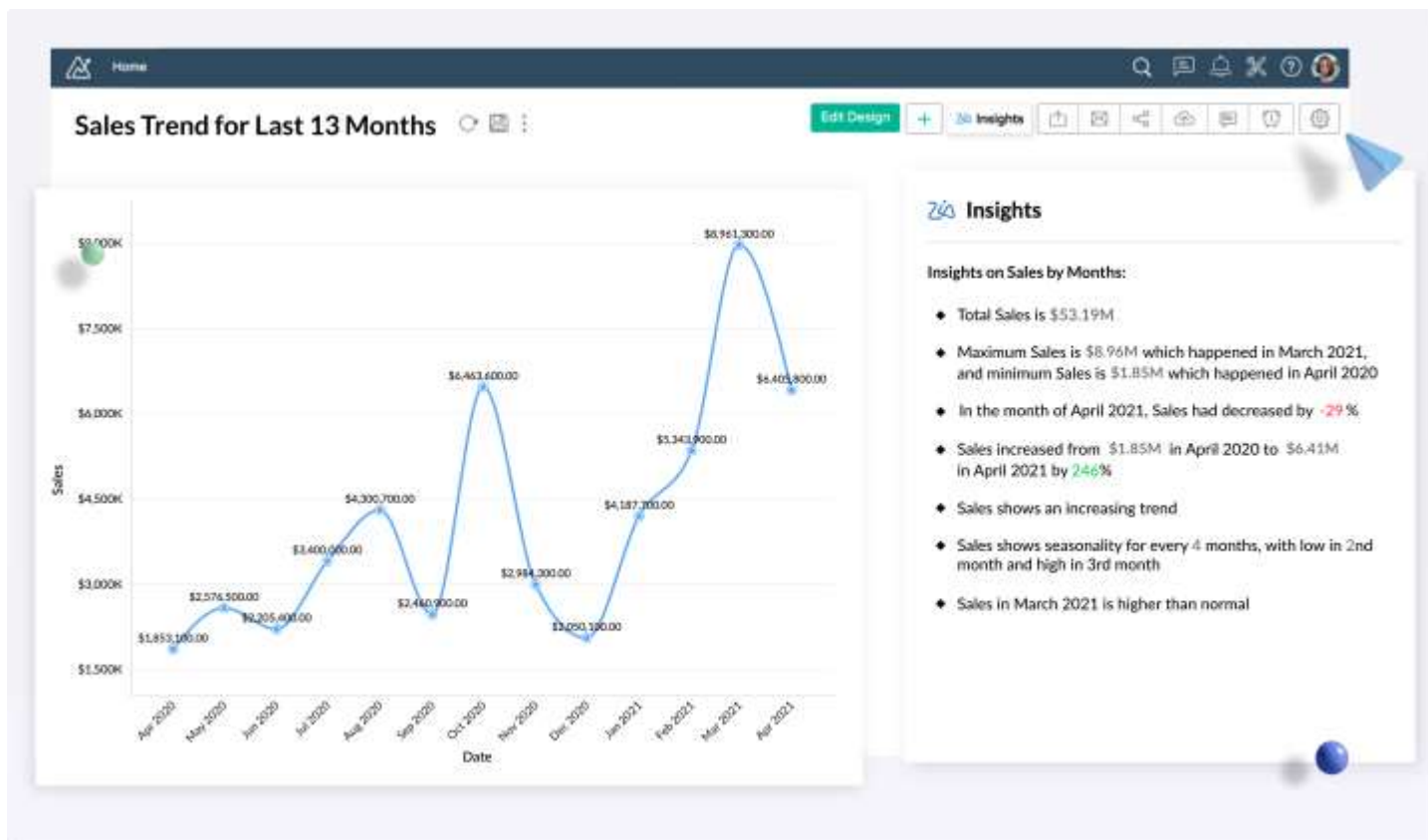
PREPARE

Prepare data for analysis

Use our augmented, self-service data preparation and management module to cleanse, transform, enrich, and catalog the data that you want to analyze.

The screenshot displays a data preparation tool interface. At the top, there's a navigation bar with 'Marketing data' and 'Leads.csv'. Below this is a toolbar with 'Undo', 'Redo', and a search bar. The main area shows a table with columns: #, Lead ID, Lead Name, Email, Company, Lead Owner, and Mobile. The table contains 22 rows of lead data. On the right, a 'Dataset details' sidebar provides an overview: Total rows: 3,925; Columns: 18; Data types: 6. Below this, a 'Dataset quality' section shows a donut chart with three segments: 73.74% Valid Data (green), 23.49% Invalid Data (red), and 2.76% Missing Data (grey). A 'Suggestions' section lists various data cleaning actions like 'Add Prefix/Suffix to Lead Name', 'Replace on Lead Name', 'Trim whitespaces from Lead Name', 'Split Lead Name', 'Change case of Lead Name', 'Fill empty cells of Lead Name', and 'Drop Lead Name'.

#	Lead ID	Lead Name	Email	Company	Lead Owner	Mobile
2	4563	Gary L Demos	GaryLDemos@zyke...	Maurice The Pants...	David Lowe	660-485-0224
3	4564	Mary C Hill	MaryCHill@zyker...	Chargopal	Thomas Mondrake	860-253-6354
4	4565	Joseph K Anderson	JosephKAnderson@...	Authentikz	Lazar Mathew	336-856-3419
5	4564	Mary C Hill	MaryCHill@zyker...	Chargopal	Thomas Mondrake	860-253-6354
6	4565	Joseph K Anderson	JosephKAnderson@...	Authentikz	Lazar Mathew	336-856-3419
7	4566	CJH H Huddleston	CJHRHuddleston@z...	"Sunny" v Surpin"	Pete Zachariah	660-643-4947
8	4568	Roy C Fields	RoyCFields@zyker...	All Wound Up	Roger Terrence	563-508-6582
9	4570	Ernesto A Burke	ErnestoABurke@zyl...	Circus World	Pete Zachariah	408-626-3735
10	4570	Ernesto A Burke	ErnestoABurke@zyl...	Circus World	Pete Zachariah	408-626-3735
11	4572	Terrance A Roye	TerranceARoye@zyl...	Merry-Go-Round	Santa Cruz Clara	732-226-1891
12	4574	Adrian T Javier	AdrianTJavier@zylk...	"Pender" v Food St...	Tina Thomas	507-417-6153
13	4575	Sean B Proto	SeanBProto@zyker...	"Lulu" v "	Jasmine Frank	620-637-3622
14	4576	Jeannette O Goodloe	JeannetteOGoodloe...	Itak N Sack	Pete Zachariah	314-682-7318
15	4577	Hortencia W Miller	HortenciaWMiller@...	"Erlbacher" v "	Rozario Diego	209-345-5165
16	4578	Victor A Fredericksen	VictorAFredericksen...	Counrty Club Marke...	Tina Thomas	410-241-7129
17	4579	Charles S Paige	CharlesSPaige@zylk...	Asian Answers	David Lowe	775-522-5030
18	4579	Charles S Paige	CharlesSPaige@zylk...	Asian Answers	David Lowe	775-522-5030
19	4580	Holly R Estes	HollyREstes@zyker...	National Tea	Pete Zachariah	775-317-8837
20	4581	Roxanne O Siegel	RoxanneOSiegel@zyl...	Rez Audio Video Ap...	Harold Paulan	631-849-0379
21	4582	Crystal A Johnston	CrystalAJohnston@z...	Target Source	David Lowe	601-300-3161
22	4583	John A Boone	JohnABoone@zyker...	Complete Tech	Thomas Mondrake	432-301-6281



ANALYZE

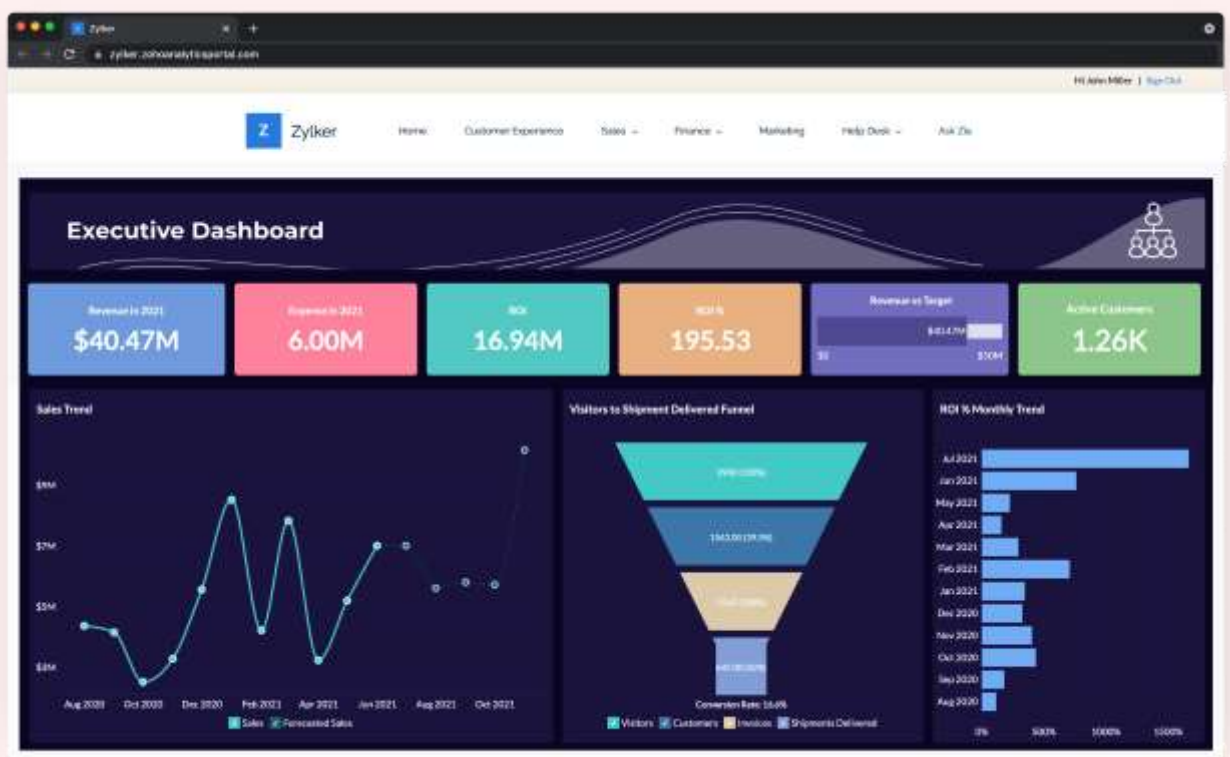
Augment **your analysis with AI**

Hold conversations with our smart AI assistant, generate automated insights with a single click, predict the future trends, do cognitive and what-if analysis, setup smart alert and much more.

VISUALIZE

Visually analyze your data

Build insightful & interactive reports and dashboards with our easy drag-and-drop interface. Use a wide variety of charts, widgets, pivot tables and tabular view components to visualize your data.



Request a Demo



Meet POWER BI, uncover powerful insights and turn them into impact

Do more with less using an end-to-end BI platform to create a single source of truth, uncover more powerful insights, and translate them into impact.



Power BI

We are proud Power BI partners, your certified experts

Turn your data into visuals with advanced data-analysis tools, AI capabilities, and a user-friendly report-creation tool

Uncover insights with AI ▾

Turn your data into visuals with advanced data-analysis tools, AI capabilities, and a user-friendly report-creation tool.

Bring all your data together ▾

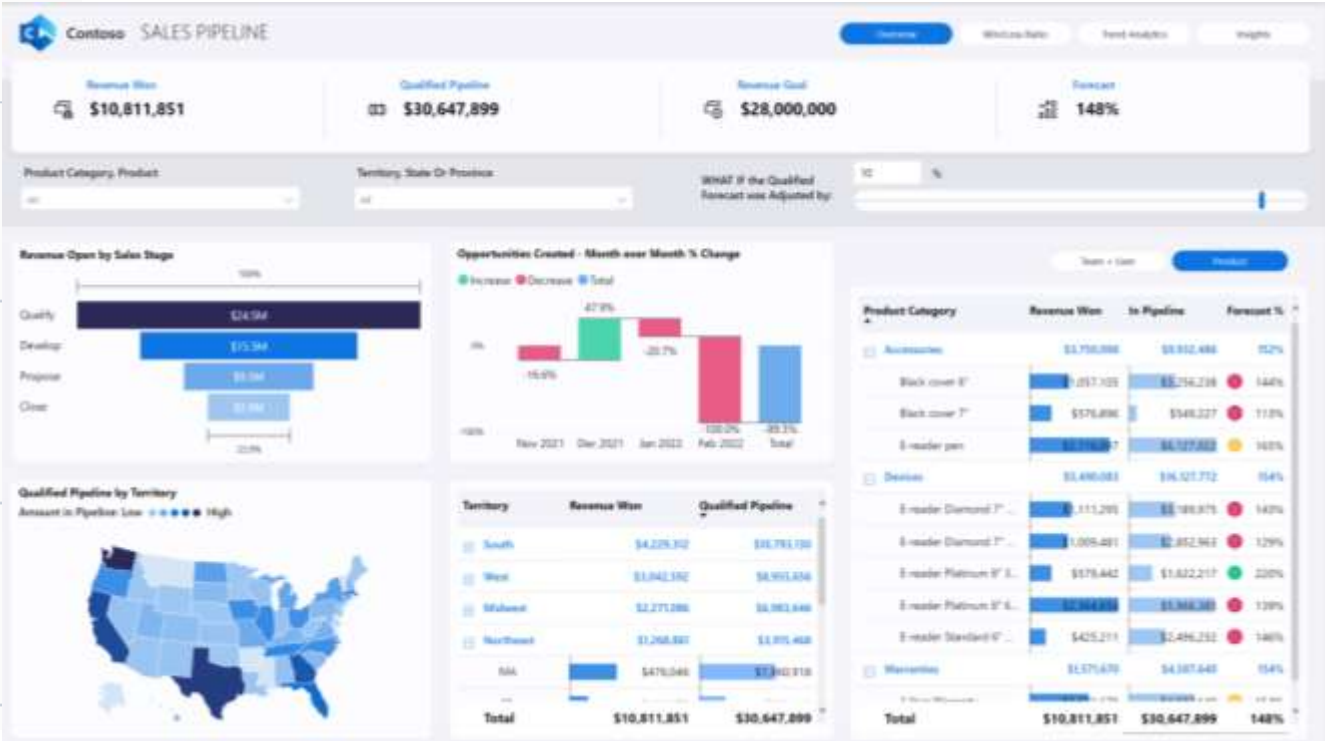
Create datasets from any source and add them to the OneLake data hub to create a source of truth for your data.

Turn insights into impact ▾

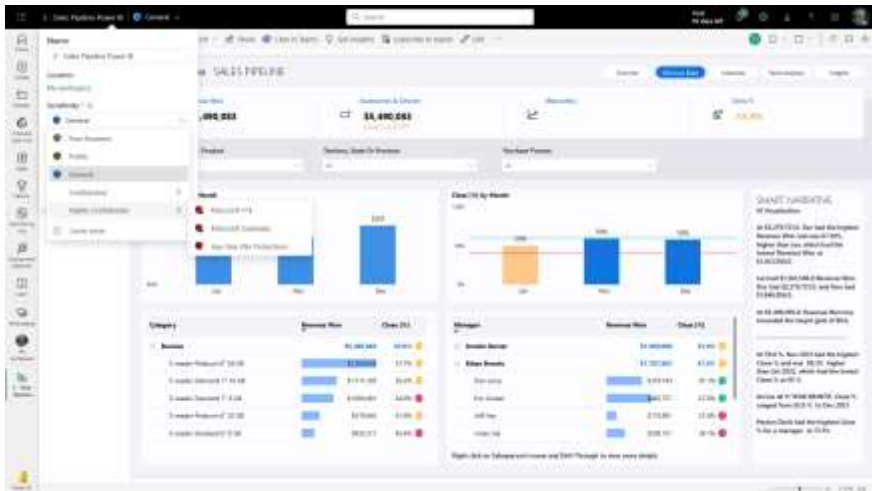
Help users make better decisions by infusing insights into the apps you use every day, like those in Microsoft 365.

Empower every data team ▾

Reshape how your organization accesses, manages, and acts on data by activating Microsoft Fabric in your Power BI experience.



Data Analytics & BI Tools



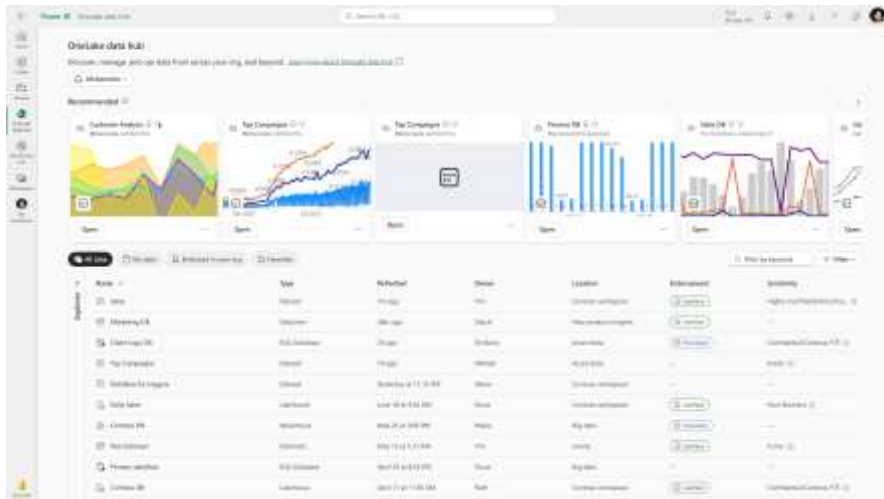
Microsoft Power BI, offer a unified, scalable platform for self-service and enterprise business intelligence (BI). Connect to and visualise any data, and seamlessly infuse the visuals into the apps you use every day.

Redlands offer dedicated Power BI consulting services so that you can transform and strengthen your data into actionable insights.

With Microsoft Power BI solution, you can visualise data, create immersive reports and can share the same across their organisation to strengthen everyone with productive decision-making capabilities.

Request a Demo

Power BI





Customer Relationship Management systems that support business growth

Providing all the tools you need to collate, store, manage and analyse customer data. Enabling interactions to retain customers and drive revenue



[Contact Us](#)



We are proud partners of Zoho and Monday.com

Allow us to find the perfect CRM solution that meets your business needs



Begin by Zoho is a simplified CRM software designed specifically for small businesses, startups and teams!

Trusted by 20,000+ businesses, Begin helps small businesses unify all customer-facing operations; marketing, sales, onboarding, delivery, and support and manage customer relationships effectively. What makes Begin unique and a compelling choice for any business? Simplicity and ease-of-use.



Zoho CRM is for businesses of all sizes, from mid-scale to large enterprises. Key features include; contact management, sales funnels, pipeline management, workflow automation, AI-powered conversational assistant, task management, managing marketing campaigns, sales forecasting, customer support & service, inventory management, reporting & analytics, and seamlessly integrating with 500+ popular business apps in a single business system.

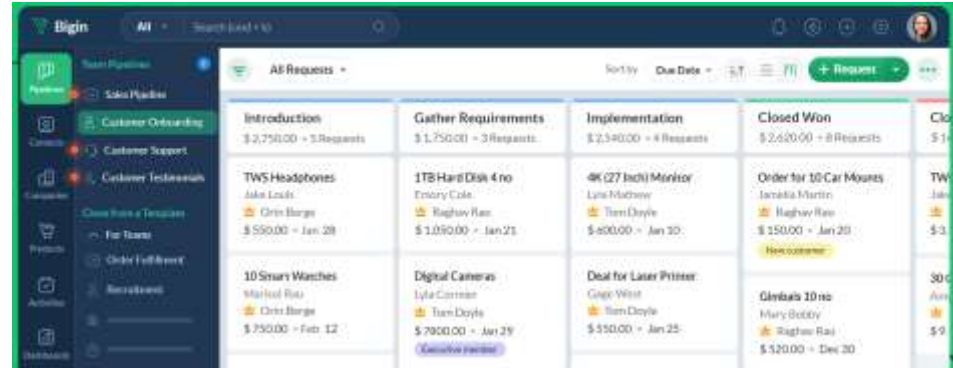


Monday Sales CRM is ideal for small-medium businesses and offers customizable, no-code solutions for the entire sales cycle in one intuitive and collaborative place.

Key features include; mass emails & HTML editor, shared email inboxes, AI email generator, funnel chart, leaderboard, deal stages and more, integrating with most sales apps and tools to ensure work is done as efficiently as possible.

The easiest CRM to manage your customers

Sales deals, support tickets, customer onboarding, order delivery, customer testimonials, contracts, and everything in between. Bigin is all you need to streamline your customer operations in one platform. Get started in under 30 minutes.



Watch Overview ▶

Request a Demo

Whether you're ready to move beyond spreadsheets or simply replace legacy CRM tools, any one can begin their CRM journey and grow their business. Choose one of the pre-defined templates or simply get started by customizing the CRM for your business in no time.



Superfast work. Steadfast growth.

Bring the very best out of your customer-facing teams with robust automation, comprehensive analytics, personalized solutions, and more. Sign up and get started in no time, the fastest implementation in the enterprise CRM market.

Engage with your customers through the right channel at the right time and with the right message. With Zoho CRM you can harness the power of omni-channel presence, segmentation, KPIs, predictive intelligence, and more to deliver personalized experiences that breed customer loyalty.

Watch Overview ▶

Request a Demo



The CRM that's simple to set up and easy to use.

One place to manage every aspect of your sales process. Capture and import leads, unify deal and contact information, centralise communication by integrating your Gmail or Outlook, record every interaction with customers, and build lasting relationships, all on one customisable platform.

Deals

Main table Kanban Forecast + Integrate Automate / 2

Active deals	Owner	Contacts	Stage	Close Probability	Est. deal
Twister Sports	[Avatar]	Madison Doyle	Qualified	80%	\$7,500
Ridge Software	[Avatar]	Phoenix Levy	Proposal	60%	\$10,000
Bluemart	[Avatar]	Leilani Krause	Negotiation	40%	\$5,500

Closed won	Owner	Contacts	Stage	Close Probability	Est. deal
Yelloworks	[Avatar]	Amanda Smith	Won	100%	\$15,200
Sheleg Industries	[Avatar]	Jamal Ayers	Won	100%	\$24,000
Zift Records	[Avatar]	Elian Warren	Won	100%	\$4,000
Weissman Gallery	[Avatar]	Sam Spielberg	Won	100%	\$18,100
SFF Cruise	[Avatar]	Hannah Gluck	Won	100%	\$5,800

monday sales CRM

Forecasted revenue: **\$211,800**

Won deals - avg. value: **\$69,500**

Sales pipeline: Won, Lead, Proposal

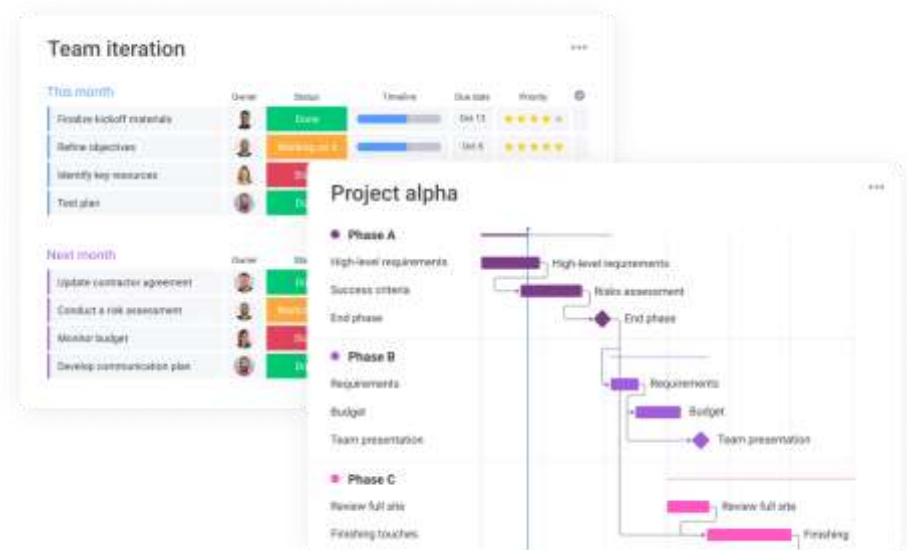
Request a Demo

Want to chat?



The collaborative work platform you need to make an impact

Empower your team to plan, run and track their projects, processes and everyday work, seamlessly.



[Request a Demo](#)

 **monday.com**



We are proud Monday.com partners. One platform. Limitless workflows.

Manage simple to complex projects and everything in between.

When **an object** meets these **conditions**, create an **item** and sync all future changes from **Salesforce**

[+ Add to board](#)



09:41 Monthly planning

This month

Finalize kickoff	Done
Refine objectives	Working on it
Resources	Stuck
Test plan	Done

Next month

Update agreement	Stuck
Risk assessment	Working on it
Monitor budget	Stuck
Develop plan	Working on it
New test	Working on it

Status column
Get an instant overview of where things stand

Timeline column
Visual breakdown of your team's workload by time

Steve
2 min ago

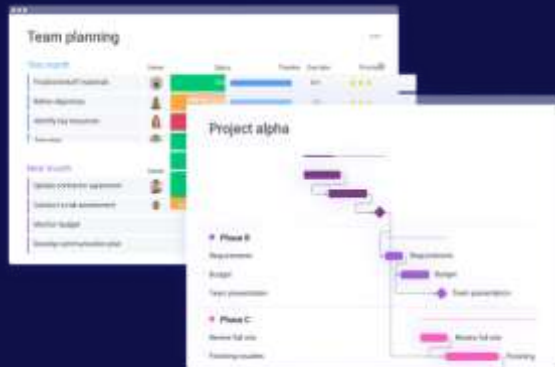
@Jane Looks good. I'll move it over to legal for review.

[Comment](#)



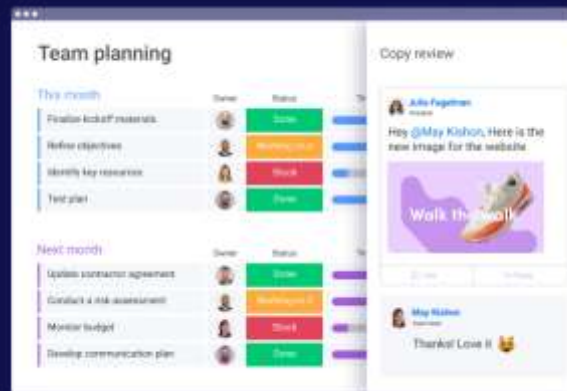
Set up and onboard your team quickly and easily.

Get started fast with hundreds of visual and customisable templates - or create your own.



Streamline all communication.

Keep all comments in the project environment so you spend less time chasing updates and more time supporting your team.



Build high-level overviews.

Create your team's perfect high-level overview on a no-code platform to see all of your ongoing work at a glance.



Our Services

As a certified monday.com partner, we offer a wide array of product training, consulting, and implementation services customised to your business goals.



Licenses, product consultation, and implementation

We'll dive deep into your internal operations and workflows, recommend the correct Monday plan for your needs and deliver a detailed statement of work (SOW).

With hands-on implementation, we will tailor your monday.com account to perfectly align with your unique needs



Onboarding, training and business-wide adoption

We ignite your team's potential from the very start, ensuring seamless onboarding and impactful training sessions.

Our certified consultants ensure a smooth adoption and value gain (ROI) from day one, demonstrating how each team can customise workflows, dashboards and boards.

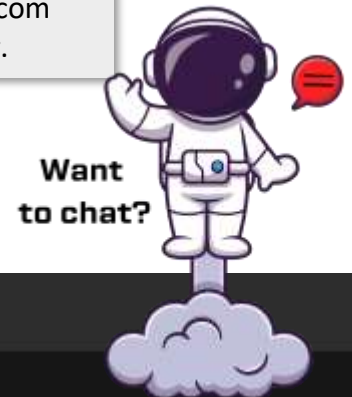


Optimisations, automations and integrations

With our deep knowledge of both monday.com and your business needs, we craft bespoke automations, templates, boards, dashboards, views, widgets, and integrations with other tools within your business.

Unlock the true power of monday.com when you select us as your partner.

[Request a Demo](#)





Grow your business whilst empowering your team

Customisable and user-friendly HR software that automates time, talent and finance processes in one centralised place

[Request a Demo](#)



We are proud Factorial partners, your go-to supplier for a digitalised and streamline HR process.

Try Factorial for FREE and purchase bundles that best suit your business needs.

Core Bundle

- Employee portal
- Documents and contracts
- E-signature



Operations Bundle

- Time Off
- Time Tracking
- Shift Management
- Payroll



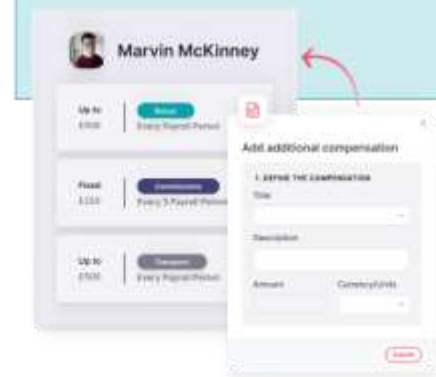
People Bundle

- Recruitment
- Performance and Competencies
- Engagement



Finance Bundle

- Expenses Management
- Factorial Cards



Save time and money by automating your HR processes: time off, documents, reports, recruitment, performance, expenses & more!

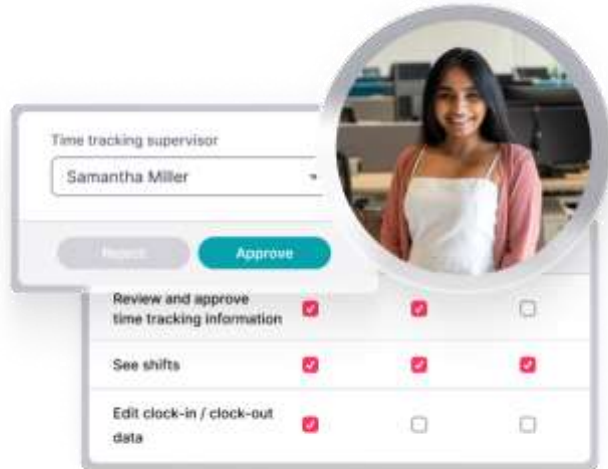
Task Management and Workflows

Give new employees the experience they deserve, by creating an onboarding process with automated workflows. You can assign tasks to new team members and stakeholders to ensure their first week goes as smoothly as possible.



Notifications & Authorisations

We understand that every organisation has its own roles and every role has its own function. By customising permissions and notifications, you can choose who can see what and who should receive certain notifications.



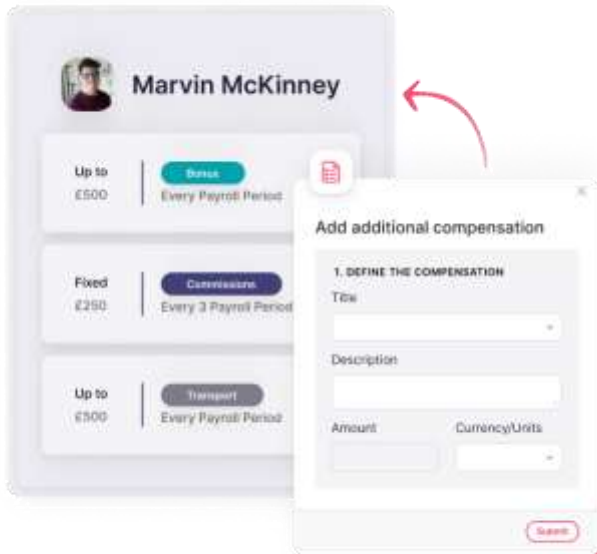
Reports & Analyses

Using Factorial's reports is easy. Create customised reports or use pre-defined ones to build your dashboard and get access to real-time information about your employees, such as headcount, average salaries, team growth and much more.



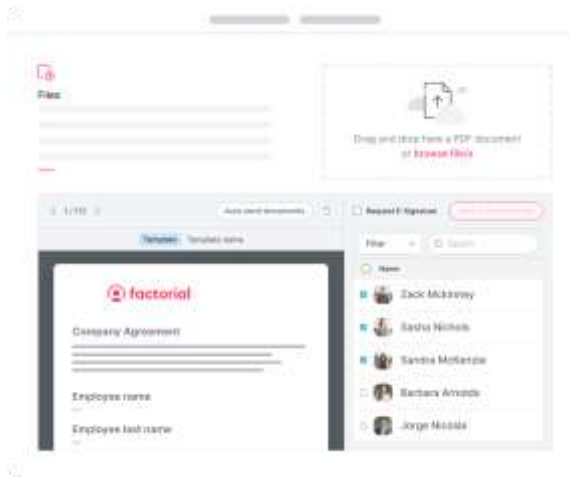
Employee Portal

Save time by giving your team the autonomy to manage their own information, share it with colleagues and have access to the company's organisational chart.



Documents & Contracts

You have access to a directory for storing and sharing all HR documents, from contracts to pay slips.



E-Signature

Forget pen and paper. Why not switch to Factorial's electrical signature? Not only is it good for the environment, it also saves you headaches and hours of printing and scanning.



Where people grow

Want to chat?





Keep up to date with the latest changes in BI and Data Warehousing

Subscribe to our newsletter on LinkedIn

Subscribe



Are You Looking For The Best Bi Tools For Reporting?

8th May 2023

Microsoft has developed some of the best BI tools for reporting and analysing information. They enable you to enjoy real-time reporting and analysis using performance data and market trends.



Business Intelligence Solutions For Businesses Of All Sizes

24th April 2023

If you want to give your business a competitive advantage, business intelligence (BI) is the way to go.

Migrate your data into a repository to form a single source of truth

Our purpose built data warehouses will securely hold your data allowing real time access.

#Data Warehousing
#Data Cleaning
#Data Mapping
#Data Extraction
#Data Ingestion
#Data Analytics
#Data Marketing

info@redlands.co.uk
www.redlands.co.uk



Make The Most Of Your Data With Our Warehousing Software

27th March 2023

Do you have large amounts of data but don't know how to utilise it? Our data warehousing software helps you manage and analyse even the largest volumes of data from many different sources. Because you'll have a centralised repository of data, it can be integrated....



Gain Valuable Insights with Business Analytics Software

10th April 2023

Want to do a deep dive into your data? Business intelligence (BI) should be the foundation for both your short-term and long-term strategy. This type of software is on the rise, with more companies interested in innovating faster and more effectively. ...



Manoeuvring your data through a complex network, into one single repository

Building bespoke data management platforms that enable real-time tracking, visibility and analysis.

#SupplyChainManagement
#ProductionReporting
#Manufacturing
#LogisticsReporting
#InnovationReporting

info@redlands.co.uk
www.redlands.co.uk



How can I make it? DEVELOPER

How can I break it? TESTER

info@redlands.co.uk
www.redlands.co.uk




The Many Benefits Of Using BI Tools For Reporting

13th March 2023

Do you want to gain a more comprehensive view of your business data, and make better informed decisions in 2023? Business Intelligence (BI) tools are brilliant for improving the decision making process and offer a wealth of other benefits to companies of all sizes....



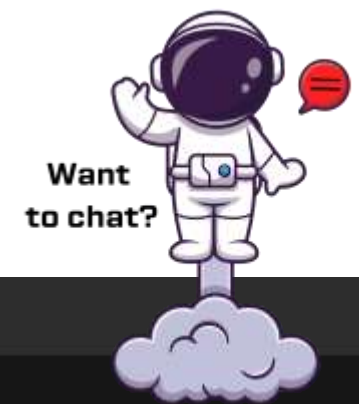
7 Reasons To Use Redland As Your Business Intelligence Consultancy

27th February 2023

Redland Information Systems love working with clients to unleash the power of their data. Here are just 7 reasons to choose us as your BI consultancy firm in 2023: Our consultancy services cover all aspects of business intelligence. We can help build a bespoke...



Messy Data VS Tidy Data

Enquire



About Us

Intro ▾

Expertise ▾

Solutions ▾

News

Contact Us



Need a navigator to take you to the next frontier?

Contact us for a conversation about where you are and where you want to be.....

Follow us on



First Name	Last Name
Email	Phone Number
Preferred contact method ▾	What are you looking for? ▾
Your enquiry	

11 + 10 =

SUBMIT

Enquire



About Us

Intro ▾



Expertise ▾

Solutions ▾

News

Contact Us

Or book an appointment connect with one of our expert consultants

Sarah Philpott

Book a time to chat!


🕒 30 min

💬 Web conferencing details provided upon confirmation.

Trying to make sense of your Data? We are more than happy to have a chat to crack the

Connect on LinkedIn





Select a Date & Time 

February 2024

MON	TUE	WED	THU	FRI	SAT	SUN
			1	2	3	4
5	6	7	8	9	10	11
12	13	14	15	16	17	18
19	20	21	22	23	24	25
26	27	28	29			

Time zone

🌐 UK, Ireland, Lisbon Time (12:16pm) ▾

Chad Cookney

Book a time to chat!


🕒 30 min

💬 Web conferencing details provided upon confirmation.

Trying to make sense of your Data? We are more than happy to have a chat to crack the

Connect on LinkedIn



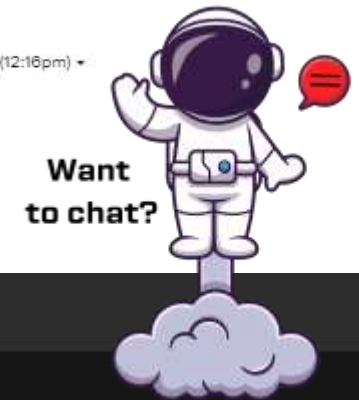
Select a Date & Time 

February 2024

MON	TUE	WED	THU	FRI	SAT	SUN
			1	2	3	4
5	6	7	8	9	10	11
12	13	14	15	16	17	18
19	20	21	22	23	24	25
26	27	28	29			

Time zone

🌐 UK, Ireland, Lisbon Time (12:16pm) ▾



Website Metrics & Conversions

Metrics per month	Conversion	Quantify	Pages
No.of Users	Watch Videos	Play at least 50% of video	On Homepage, and Solution pages
No.of New Users	Initiate a chat	For more than 1 minute	Available at the bottom of all pages
Average Engagement Time	Request a demo	Commit to a date/time	On all Solution Pages
Page Views	Download an article	On download	On some Expertise Pages
Landing Page	Contact Form	On completion	On the 'Careers' & 'Contact Us' pages
No.of Conversions	Newsletter Subscription	On subscription	On 'News Page'